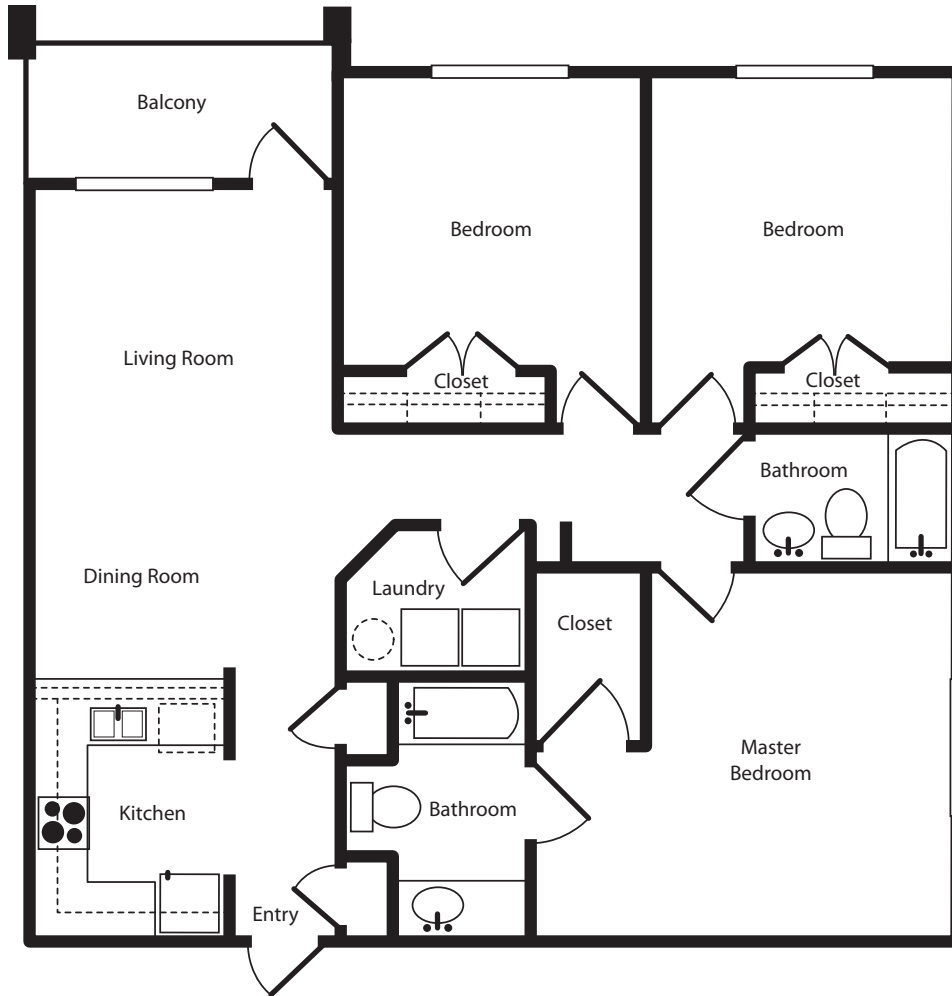


# The Laurel

3 BED / 2 BATH

# 1229

SQ. FT.



SEASIDE GROVE

AT CAROLINA FOREST

101 Augusta Plantation Dr., Myrtle Beach, SC 29579

[www.seasidegrove.com](http://www.seasidegrove.com)

*\*Floor plans are artist's rendering. All dimensions are approximate. Actual product and specifications may vary in dimension or detail. Not all features are available in every apartment. Prices and availability are subject to change. Please see a representative for details.*

THE BEACH COMPANY  
EST. 1945

